



MODTRAX™

POCKETSLIDE

High Performance Sliding Door Systems



**High-Performance Sliding Door System
designed for Medical, Commercial,
Educational Environments and More...**

Standard Features

- Pre-Assembled Heavy-Duty Track set to the Clear Opening
- Dual Independent Removable/Adjustable Soft Closers
- Quad 1 ¼" Nylon Pressed Ball Bearing Rollers
- Dual 2" Aluminum Carriage with 1" Trigger Arm
- Dual HD Adjustable Door Stops with Rubber Bumpers
- Concealed Adjustable Ball Bearing Floor Guide & Track
- Vertical Door Pocket, integrated gaskets, and seamless cap
- Dual Custom Heavy Duty Adjustable Brackets
- Pre-Drilled Track and Door Pocket
- Anti-Vibration Hardware
- Shims and Installation Hardware

Benefits

- Pace Saving
- Soft Closing
- Endless Clear Opening Sizes
- Pre-Assembled Track
- Pre-Drilled Track & Jamb
- Heavy-Duty Ball Bearing Rollers & Guides
- Independent Removable Soft Closers
- Active safety features
- Easy Installation
- low maintenance

Doors

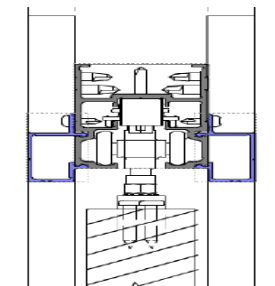
- Fits any 1 ¾" Door
- Ability to match Hinge Doors Identically
- Aluminum Stile & Rail Doors
- Wood Stile & Rail Doors
- Laminates/Formica
- Acrovyn, VT, Edger's, Masonite
- Custom Doors
- Over Sized Doors

Options

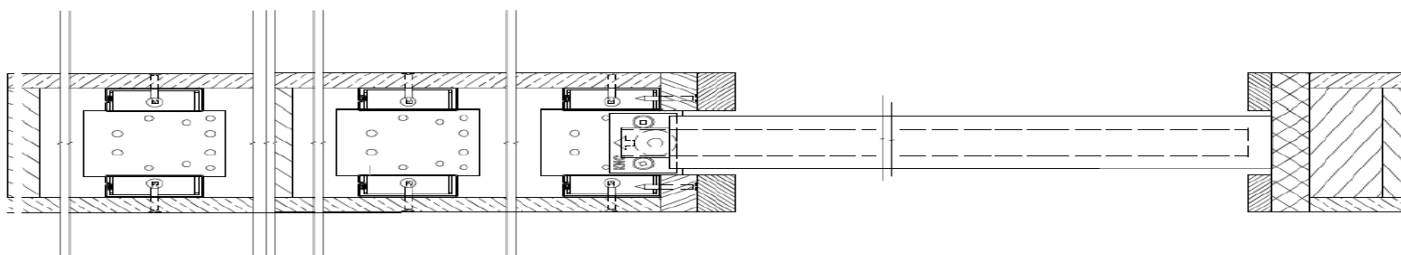
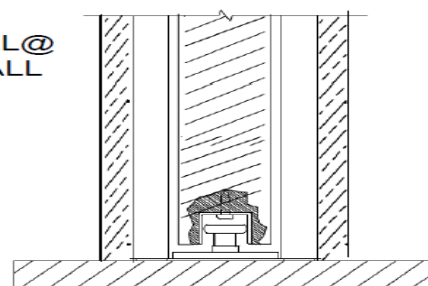
- **ModTrax™ Care Plan**
- 2 x 4 or 2 x 6 Wall Construction
- Auto door gasket at the bottom of the door
- Enhanced gaskets
- Mechanical Self-closer
- Custom transoms
- Trim Kit for 2 x 4 Walls
- Custom Design Systems
- ADA Compliant Hardware

PocketSlide™ General Elevations

HEAD @
WALL



SILL @
WALL





MODTRAX™ offers an array of hardware options in various series, functions and finishes for any facility or use.

- Key locks with SFIC option
- Privacy locks (with or without indicator)
- Self-locking, Self-latching Mortise
- Single Egress Mortise
- ADA compliant hardware
- Magnetic lock with card reader
- Electrified Lock with Built-in Power Transfer
- Flush & Surface pulls
- Anti-ligature hardware
- Narrow Profile Mortise
- Surface pulls with mortise lock
- Antimicrobial Coating Available
- Standard Finishes US32 & US32D

